

THE GARDENZETTE



The newsletter of the Rock Spring Garden Club, Arlington, VA www.rockspringgardenclub.com



Rock Spring Garden Club is a member of the National Garden Clubs Inc., Central Atlantic Region, National Capital Area Garden Clubs, Inc., District III; and Southern Atlantic Region, Virginia Federated Garden Clubs, Inc., Piedmont District

Volume 59, Number 3

November 2020

OFFICERS

PRESIDENT

Charlotte Benjamin

VICE PRESIDENT

Ann Stevens Kelly

SECRETARY

Carolyn Barone

TREASURER

Nancy Snell

GARDENZETTE EDITOR

Mary Garnett

CONTENTS

Nov./Dec. Program	1
President's Message	2
Treasurer's Report	2
Senior Outreach	3,6
Floral Outreach	3
Design of the Month	3
Horticulture	4
Liaison Report	5
Garden Therapy	7
Christ Crossman Garden	8
Virtual NGC Schools	9
Zoom Instructions	9
Autumn Planters	10
Photo Gallery	11,14
Design of the Month	12
Horticulture Table	13

Thursday, November 19, 10:00 a.m. - 10:25 a.m.

Zoom General Meeting, followed by:

**THE NCAGC JUDGES COUNCIL MORNING OF DESIGN
via Zoom at 10:30 a.m.**

Our judges will showcase designs for the holidays from Thanksgiving through New Year's celebrations - think centerpieces, mantel arrangements, swags, wreaths and other

seasonal artistic designs and crafts. We will explain components and tips so that you can use these ideas for creating your own designs for home, neighbors and gifts.



Our November 19 RSGC Zoom business meeting will begin and end promptly at 10:00 am - 10:25 am. Then we will end our Club Zoom session and re-sign in to the Morning of Design Zoom link. We will send you that link shortly a day or so before our monthly meeting.

Thursday, December 10, 2:00 p.m.

Virtual Zoom HOLIDAY TEA

Please bring an adult beverage of choice and show us your holiday snacks and treats. Wear something sparkly. A chance to dress up! Program Committee is working on Zoomable stuff so start thinking about doing a holiday design or decorations, wreaths etc. using fresh or dried plant material. They may even be incorporated in with your traditional yet artificial decorations that mean so much to you. It's a party so no limitations! I know that if I use Zoom on my iPhone, I've tried to slowly (very slowly) pan the room to show you what's on display so if you want to do that, let us know. Or photograph your design or holiday décor display and send the picture to us and we can do the sharing on Zoom. We will send out an email closer to the date and remind you what's planned.

ZOOM INSTRUCTIONS INSIDE



TREASURER'S REPORT

Oct. 1-31, 2020

Beginning Balance:

Receipts:

Expenses:

Ending Balance:

Nancy Snell, Treasurer

President's Message

There is an 'elephant in the room' this month ... Thanksgiving gatherings will look and seem very different from other years! Caution and restrictions will be the norm, masks and hand sanitizers will be front and center and even our traditional menus, adjusted. However, as we look around and within ourselves, we still can find so much to be truly thankful for this year! Gardeners, farmers and those who celebrate each season in all its uniqueness, carry thankfulness deep in their hearts ... my warmest wishes to each of you for a happy and safe Thanksgiving!

In spite of pandemic restrictions, the new Senior Outreach Committee is active and connecting with the Mary Marshall Residents. Please look for their report and photos in the **Gardenzette** this month. I am so thankful for the work of our Standing Committees. Many have developed some form of connectivity with their projects. Rock Spring Garden Club Board Chairmen are very creative in keeping the lines of communication open!

You recently received a NCAGC Morning of Design reminder that promises to be as interesting on Zoom as it has been in person. The NCAGC Judges Council Zoom Meeting beginning at 10:30 a.m. is on November 19th. We will have a very short business meeting before so please join the RSGC Club Zoom Meeting at **10 a.m. SHARP**. At 10:20 we will adjourn so you will be able to log into the Morning of Design. Finally, be sure to look for the 'December Teaser' in the **Gardenzette!!!**

Charlotte

JANUARY 2021 GARDENZETTE

The next issue of **Gardenzette** will be published in January, 2021, to combine December and January news for a full newsletter. Your photos of outdoor planters and wreaths, indoor holiday decorations, multi-rhythmic floral designs, and entries for the virtual horticulture table will be published in January.

In coming weeks, please be sure to watch your 'inbox' for various announcements, opportunities, etc.

Thanks ... *Charlotte*

January Zoom Board Meeting

Thursday, January 7, 10 a.m.

This is also the deadline for contributions to the December/January Gardenzette.

SENIOR OUTREACH

Mary Kudless

Please Join the Senior Outreach Committee in a **Holiday Sock Drive for the Residents of Mary Marshall Assisted Living.**

Our members are off to a great start in forming an ongoing relationship with the residents and staff of the Mary Marshall Assisted Living Facility.

Many of our members donated personal care items to the residents in the early Fall and they were very much appreciated. At this very moment, the facility is filled with pumpkin floral designs, created by both our members and residents in the last week during the events described below.

A few months back, the leadership of Mary Marshall alerted us to a universal need that all the residents experience in the winter months and that is the need for NEW socks! We can all attest that there is nothing like a new pair of socks to help your feet feel happy and cozy. The Senior Outreach Committee would like to launch a "Sock Drive" for a holiday gift for each resident.

Here is what would be helpful:

- White athletic socks- not ankle socks, but higher
- Trouser socks for men and women- in cute, colorful patterns or navy, black and grey
- Warm winter socks- wool or cotton blends to wear with boots

There are 30 men and 22 women residing at Mary Marshall. If you would like to donate, the Committee will make sure that your gift gets delivered in plenty of time for the holidays. If you would like to put your socks in a little gift bag and include a card or note, that would be lovely, but certainly not required.

Drop Off Dates and Locations:

November 22-30

AnnMarie Fay (front porch)

December 11-21

Mary Kudless (front porch)

FLORAL OUTREACH

Holiday Outdoor Planters and Wreaths

Julie Williams

Dear Rock Spring Garden Club members,
If you are planning on doing either a wreath or an outdoor Holiday planter this year, you can earn design credit for it by sending a photo of your creation to Mary Garnett by January 7, 2021. There is no judging and no particular requirement design-wise. It's just a fun way to share Holiday cheer even though we cannot meet. Photos submitted will be featured in the January **Gardenzette**. Any or all are encouraged and there is space for all.

Many thanks for your interest.

DESIGN OF THE MONTH: Multi-Rhythmic

Anita Brown



Our design this month is a Multi-Rhythmic design. This is an easy design that requires two or more separate rhythms that could go in any direction. Some designers like to use a vertical and circular design, as noted in the attached pictures. However, there are various other ways to put together this design, as vertical and horizontal lines, diagonal and horizontal lines, etc. The lines can be

continuous, interrupted and/or crossed.

While you may wish to show your holiday designs and decorations at our Holiday Party, **design credit will only go to those providing a Multi-Rhythmic design.** Of course, a Multi-Rhythmic Christmas arrangement would be welcomed!



HORTICULTURE

Christine Wegman

Virtual Horticulture Table

This month we will continue with the virtual horticulture exhibit through the **Gardenzette**.

The horticulture for this month is: any flower blooming in your garden, and any branches with berries.

If you have an example of this type of plant, stage it as you would for the regular horticulture table, in a green bottle with wedging, and take a picture of it. All photos must be accompanied by the correct botanical name of the plant and your name. Send the photos to Mary Garnett and they will appear in next month's issue. They will not be judged.

Mountain Laurel

Kalmia latifolia

This beautiful Eastern North American native shrub is the state flower of Connecticut and Pennsylvania, and is a member of the same family as azaleas and rhododendrons.



Although it can grow to 20 feet in the wild, in cultivation it usually tops out at 5-6 feet high and wide. It has a lovely vase shaped habit and rarely needs pruning. Mountain laurel is evergreen, with beautiful dark green waxy leaves and showy clusters of blooms that cover the plant in June. Bloom colors range from pink and white to red and white.

Because mountain laurel grows slowly and is not easy to propagate, it is not as commonly seen in our gardens as many other flowering shrubs. Mountain laurel may not be as showy as rhododendron clusters, but for those who grow this plant, there is something very endearing about the beautiful buds and pretty little cup-shaped flowers.



Mountain laurel is easy to grow and likes the same conditions as azaleas, that is, well-drained, acidic soil. It is happy in partial shade, but tolerates full sun, as well as quite a bit of shade. Because all parts of the plant are slightly poisonous, the species is deer resistant, but some of the new introductions are not.

Beginning in the 1970s Richard Jayne began breeding mountain laurel in Connecticut at his Broken Arrow Nursery. This was the first mountain laurel breeding program, and the resulting introductions are still among the most sought-after varieties. A University of Connecticut website names 38 different selections of mountain laurel, many of them from Jayne's program.

Jayne's work focused mostly on introducing varieties with darker, brighter colors than the species, but he also introduced two dwarf forms that only grow to about 4 feet.

Some of his most popular introductions are 'Olympic Fire', which has bright pink buds and light pink flowers.



Another striking variety is 'Bullseye', which has dark red flowers with white centers and edges.



Kalmia 'Meteor' has beautiful star-shaped flowers, while 'Snowdrift' is a pure white form.



For those with small spaces, the two dwarf varieties are an attractive option. 'Elf', like its name, is a diminutive version of the species, while 'Minuet' is very much like a dwarf form of 'Bullseye'.

We grow four mountain laurels in our garden, including one from Broken Arrow Nursery, which we visited many years ago. They are among our very favorite plants.

LIAISON REPORT

Kate Abrahams

National Arboretum's outside grounds are now open 8 - 5 daily. Buildings remain closed. Mobile app now available for visitors. Twenty koi are back in restored Admin Center pool. 3501 New York Ave NE, Washington DC (202) 245-4523

Floral Design Workshop with Fruits and Vegetables. Green Spring Gardens Nov. 21st 10 am- 11:30 am.

Master Designer Betty Ann Galway leads the program. \$39 per person to register plus \$30 supply fee. 4603 Green Spring Road, Alexandria (703) 642-5173. www.Fairfaxcounty.gov

Brookside Gardens Online Poinsettia Sale. Unusual cultivars on sale now through Nov.19 for pickup Dec.4-6th 10am - 3 pm. \$8.95 - \$13.95. 1800 Glenallen Ave Wheaton MD (301) 962-1400 www.montgomeryparks.org. Contact Kathy.Caisse@montgomeryparks.org with questions.

SENIOR OUTREACH

Mary Kudless

Senior Outreach Launches its Work with Mary Marshall Assisted Living Residents in Two Back to Back Events

The Goals of EVENT ONE: Creating 30 Floral Designs for the Mary Marshall Residence and Orienting the Life Enrichment Director to the Mechanics and Creation of Pumpkin Floral Designs.

The Senior Outreach Committee launched the Club's new initiative of targeting the Club's energies towards older adults with special needs at the Mary Marshall



Assisted Living Residence on Monday, November 2, 2020. Co-Chairs AnnMarie Fay and Mary

Kudless met up with 4 RSGC design volunteers: Julie Wadsworth, Renee Bayes, Janice Haines and Sheila Moore. These wonderful floral designers kindly came to AnnMarie's garage on the coldest and sunniest Monday morning we have experienced yet this Fall.

AnnMarie, kindly attending to our comfort and social distancing, turned on her space heater to prepare the work space for us.

Everyone came equipped with face masks, flowers, greens and tools. We happily welcomed Katrina Holmes, the Life Enrichment Director at Mary Marshall and we celebrated her enthusiasm and ability to jump right in.



Katrina had previously delivered about 30 mini-pumpkins and 2 large pumpkins to AnnMarie and we all teamed to manage the demands of floral designs in the tiniest of pumpkins and majestic designs in the big pumpkins. Annmarie, always known for her love of whimsy, supplied "fascinators" (hair finery), to bring out our creative energies!!!



EVENT TWO: November 6: Zooming a Pumpkin Floral Demonstration Directly to the Residents and Staff of Mary Marshall Assisted Living

It was a busy week for RSGC and our new friends at Mary Marshall. We spent much of the week purchasing and conditioning flowers and greens, prepping pumpkins, delivering flowers and supplies to Mary Marshall, executing about 30 individual designs and demonstrating the process to Katrina Holmes, the Life Enrichment Director and our liaison to the residents, so that we could team up effectively.



At this time, outside visitors are not permitted inside of Mary Marshall. Given the Covid restrictions, we devised a plan to work closely with Katrina in which she would work directly with the residents on site while we zoomed in with a hands on demonstration. We projected our Zoom demo from Mary Kudless' kitchen and Sheila Moore took the lead in creating



two lovely “sugar baby” pumpkin designs. On a parallel track, Katrina guided the members in assembling their creations. Katrina had prepped the pumpkins and the flowers and greens the evening before. Introductions were made and the work began. The Zoom platform seemed to work fairly well and the group

could see and hear Sheila well, but they could not create audio on their end for us to hear them. Nonetheless, we worked it successfully by adding a cell phone to the mix.

One of the residents had a marvelous question about how much emphasis was needed on color balancing and the color wheel. Katrina advised that this inquiry came from an artist in the group. Sheila deftly explained that while color balancing and symmetry is a helpful construct, in her experience, most flowers and colors happily team up with each other. We also shared our insider secret that our members often comb the woodlands of Arlington for our greens and fillers. We sought to convey that we can all take note of and utilize what is right around us, in our designs.



My thanks to my husband, John for his assistance with lighting and photography

GARDEN THERAPY

Susan Scotti

We had our first program this year for the Glebe Elementary School pre-K class on Thursday, October 8. There are fewer students this year; four 4-yr olds and one 3-yr old. All virtual, at home on their screens!

Margi Melnick, Pat Getz and I presented an Autumn themed program. Pat read a story, “In the Middle of Fall”, with colorful pictures of leaves in a rural setting



fully turned to autumn. Frisky squirrels gathering nuts; pumpkins and apples ready for

picking, and children playing in the leaves. Margi played and sang two songs on her autoharp, one about autumn leaves and the other about 5 little pumpkins. Pat had the pumpkins, having drawn cute faces on them. As Margi sang "then there were 4 then 3, 2, 1 and they all rolled away", Pat provided the action. She has a good voice and fortunately doesn't mind singing solo, as singing together produces audio disturbance. I talked about some of the changes fall brings, and showed a variety of leaves mounted on construction paper along with acorns, a magnolia seed pod full of red seeds, a sunflower gone to seed and other treasures.

After the program they had their “goodbye circle”, which we were invited to participate in. Our class is at 1:30, their goodbyes begin at 2:05 and the school day ends at 2:20. Of course, it is more of a challenge to engage and keep their attention than in the classroom, but they seemed to enjoy the program. Our next one is scheduled for Thursday, November 12th.



CHRIST CROSSMAN POLLINATOR GARDEN

Kate Abrahams

A new Falls Church pollinator garden is ready for visitors in front of Christ Crossman United Methodist Church. On Sunday, October 11th, Church clergy,



congregants and invited guests celebrated the opening of the garden with a ribbon cutting ceremony, recorded choir music, benedictions and congratulations all managed carefully with COVID protocols. The garden is located at 384 North Washington Street (Rt 29) at the

intersection with Columbia Street. It is next door to a Sunrise Retirement home and across the street from Columbia Baptist church.

Former District III Director and RSGC Member Mary Cottrell was asked to design a pollinator garden by the church clergy and her vision has come to life with new pollinator plants, birdhouses, cement benches, stone walkways and blooming roses. RSGC and District III donated funds to purchase two benches and Mary donated plants, another bench and a wrought iron archway in memory of her parents and son.



Head Pastor JP Hong and Pastor Julio Hernandez cut the festive red ribbon together to officially open the garden to the congregation and visitors. They blessed the garden and hoped it would provide respite to all, especially to the Falls Church community and wildlife visitors. Charlotte Benjamin

and Kate Abrahams attended the ceremony and admired the layout of the plantings.

A Purple Giant Beautyberry bush was particularly striking as were the blooming coneflowers, roses, veronica and torch lilies. Mary Cottrell was presented with a bouquet of orange roses in thanks for her leadership and continued efforts to enhance the garden walkways and plantings. Many birdhouses are ready to welcome new occupants and the benches are ready to welcome young and old to view the garden.



Congratulations to Mary for bringing her plans to life and creating a green oasis for all living creatures!

LINKS

From Julie Williams:

These Heirloom Pumpkin Arrangements Show the Wild Side of Autumn:

https://www.marthastewart.com/7986890/pumpkin-arrangements-for-fall?utm_source=emailshare&utm_medium=email&utm_campaign=email-share-article&utm_content=20201017

VIRTUAL NATIONAL GARDEN CLUB SCHOOLS

Cathy Jamieson

RSGC members are very familiar with Flower Show School but there is very little participation in the other schools that are available to all of us. I've been taking Gardening School and Landscape Design School classes for over a decade. After taking the first two courses, you gain provisional Consultant status and may join the Council. After completing the entire series of four courses, you gain Consultant status. To maintain your status, you must take a refresher course within five years. After taking four refreshers, you gain Master Consultant status. In the old pre-pandemic days, refreshers could be a two- or three-day bus trip to tour gardens and landscapes. For the past several years, I've been the only participant from RSGC and now hold Master Consultant status in both.

National Garden Clubs have transitioned wholeheartedly into virtual classes through Zoom. The experience is different, and the in-person camaraderie is missing. Also missing are the wonderful breakfasts, lunches, and snacks that had been included in the price!

This is a wonderful opportunity to experience these classes from the comfort of your home. It's also very interesting to take classes hosted by garden clubs all over the country. I recently finished two courses – one from FL, and one from AZ. The courses are always taught by people with expertise in their fields and it's been very interesting to hear from landscape architects and horticulturalists in different parts of the country.

Because there's no travel involved, no need to stay in hotels, and no facilities charges, the cost of the classes is very reasonable. RSGC also offers scholarships for regular members.

Members have expressed reluctance to take courses because of the tests required for credit. These days, tests are open book and are pass-fail. Nobody fails. Instructors and proctors also take great pains to highlight any material that will be on the test.

From a purely practical point of view, there are plenty of breaks and it's an easy, comfortable two days. I've loaded the laundry, fed the dogs, read the mail,

opened packages without skipping a beat. I even listened to one lecturer on my stationary bike.

If you're interested, all the information for courses all over the country are found at the National Garden Club site. At this link, scroll to the bottom of the page to see all the offerings.

<https://www.gardenclub.org/our-schools>. If you have any questions, please reach out to me.

ZOOM INSTRUCTIONS

Click on the link sent to you via email. If you do not currently have Zoom, it will prompt you to download the app. You do not need to create a Zoom account to download the app.

Click yes on joining with Zoom, then if asked click yes for "Using computer audio" and "Using Computer video." The meeting app will log you into the waiting room and host will let you in when it's time to join the meeting. There will be no entry to the meeting until the date and time of the meeting.

Upon entry to the meeting you will be muted. We ask that everyone mute their microphone unless they are speaking. The way Zoom works is that the active speaker will be the primary image and if you have background noise you will become the active speaker.

To see the toolbar, hover your mouse pointer over the screen image near the bottom. You will see icons at the bottom, from left to right :

- Microphone. Click the carat (^) arrow to the right of the icon to be able to unmute
- Video. Click the carat arrow and if you click "stop video" your thumbnail image will disappear.
- Participants: click the carat to see who's in the meeting with you
- Chat. This is the primary way you will ask questions. If you click Chat, a column will open to the right of your meeting video and you can type in questions at the bottom. You can choose to share with everyone or pick someone to query.

Some tips: Make sure the microphone on your device is optimized, or use headphones if you have them. If the image freezes up or you get a blank screen, it could be on the host's end or yours. Leave the meeting. Check your wifi connection and reenter the meeting link to get a new connection.

AUTUMN OUTDOOR PLANTERS



Joan Asboth



Louise Rhoads:
Autumn Ferns
with Pansies



Toby Davis



AnnMarie Fay:
Her son's porch
that she helped
them do

Julie Williams



Ashley Tessmer: My outdoor
arrangement... in water and shaded by
the Barry's banana tree that has taken
off in the past few months!!

Mary Kudless



AUTUMN OUTDOOR PLANTERS



Julie Williams



Thea McGinnis



Renee Bayes



AnnMarie Fay



Nancy Snell

PHOTO GALLERY



Joyce Fall: Reblooming
Iris germanica 'Harvest
of Memories'

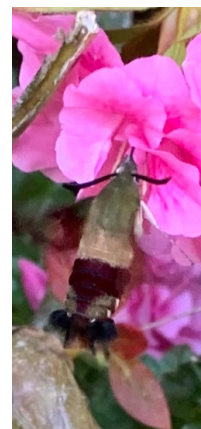


Mary Kudless:
At Hillwood



Thea McGinnis:
Re-blooming Iris

Nancy Snell:
Hummingbird
Moth feeding
on Encore
azalea



DESIGN OF THE MONTH: CASCADE DESIGN



Kate Abrahams:
Juniper, boxwood and
chrysanthemum



Janis Gunel:
Chrysanthemums, dried
daylily stems from my
summer garden

Jenny Sullivan:
asuratum,
chrysanthemums,
and marigolds



Thea McGinnis: Dahlia.
Cosmos, Lavendar



Ann Kelly: Yellow and purple
mums, stock, eucalyptus, and
variegated euonymus



Louise Rhoads: Cardiospermum
halicacabum, Balloon Vine with Mint

VIRTUAL HORTICULTURE TABLE

The horticulture for this month is:

Chrysanthemums, Japanese or Fall Anemones, and Tree Foliage



Jody Goulden:
Chrysanthemum,
Class 1, Irregular
Incurve, 'Golden Gate'



Jody Goulden:
Chrysanthemum,
Class 8, Anemone,
'Prom King'



Jody Goulden:
Chrysanthemum, Class
7, Single, 'Icy Isle'



Jody Goulden:
Chrysanthemum,
Class 5, Intermediate
Incurve, 'St. Tropez'



Jody Goulden:
Chrysanthemum, Class 10,
Spider, 'Oregon City'

Charlotte Benjamin:

Acer Palmatum
'Sango kaku' Coral Bark
Japanese Maple



Louise Rhoads:
Cronus sanguine,
a Dogwood



Ashley Tessmer: *Citrus x microcarpa*, aka
Calamondin house plant,
'acid orange' or 'Philippine
lime'

Ashley Tessmer:

Symphotrichum
oblongifolium,
aromatic aster



Jody Goulden:
Chrysanthemum,
Class 8, Anemone,
'Purple Light'



Kate Abrahams:
Chrysanthemum x morifolium aka red
daisy button type
hardy garden mum

PHOTO GALLERY



Kate Abrahams: Jo Ella Samp and Pat Getz at Glenstone Museum



Renee Bayes: Camellia



Mary Kudless



Mary Kudless: Hillwood



Mary Kudless: Hillwood



Mary Kudless



Renee Bayes: Toad Lily



Kate Abrahams: I think the Jeff Koons' giant Rocking Horse installation is fantastic!



Mary Kudless



Renee Bayes:
Fall



Kate Abrahams: Close-up of Koons' plant choices, Glenstone Museum



Joan Asboth



Mary Kudless: An unexpected mask match at Hillwood!